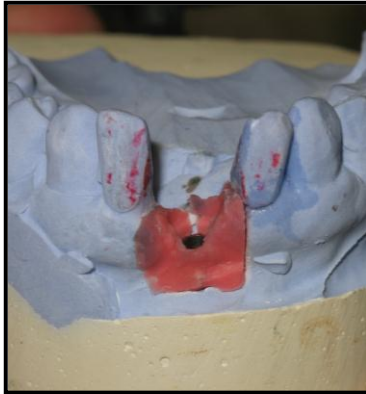
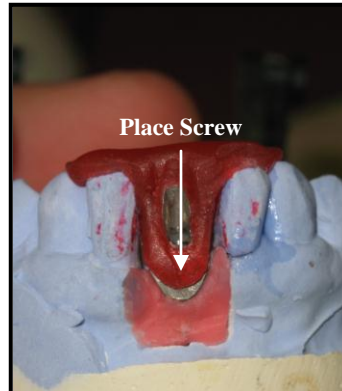
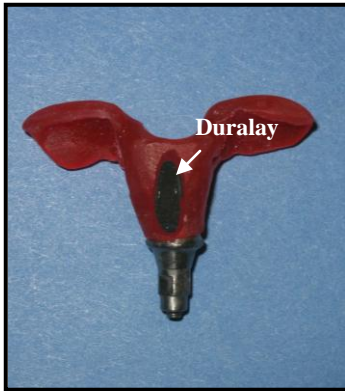


Steps for Abutment Insertion

1. Ready to place abutment



2. Duralay Implant Abutment Insertion Matrix



Directions: Abutment is inserted in red **Duralay Implant Abutment Insertion Matrix** when you receive case. Simply leave it in matrix, place it intraorally on adjacent teeth, and tighten. (**Screw may be in Abutment**) Finally, remove matrix by hand, no need to cut off. **See steps 1-4.**

3. Abutment in place



4. Prosthesis in place.

