

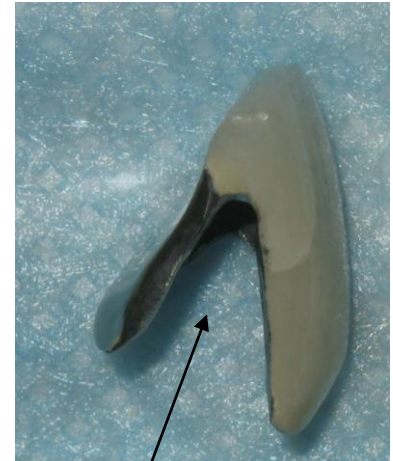


Overcrown Procedure

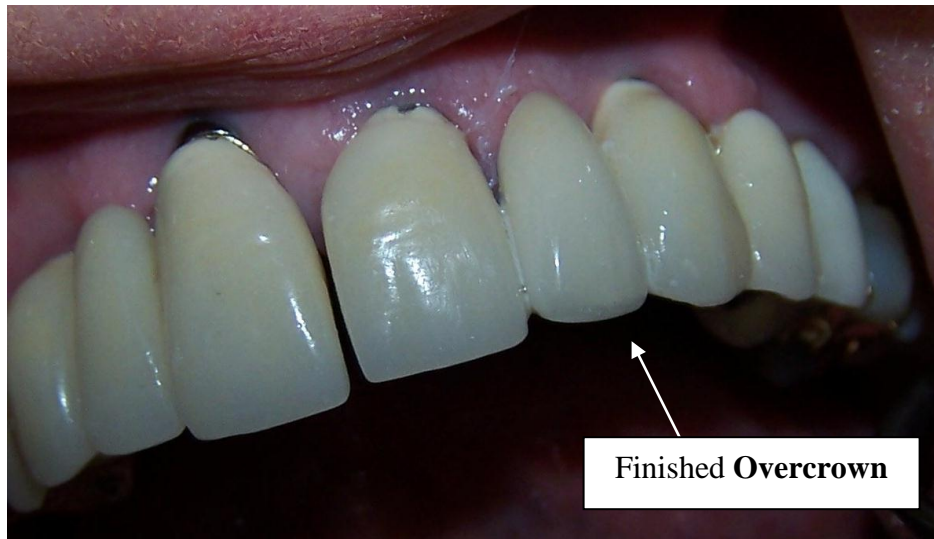
An **Overcrown** is the only long term repair for porcelain breakage to an existing frame intraorally. It is a side-less PFM that fits over an exposed frame prepared by the doctor and is bonded with dual-cure cement intraorally by dentist.



Dentist grinds porcelain off buccal and lingual to bare metal and shapes proximal finish lines for optimum esthetics. An impression is taken of prepared frame.



A side less **Overcrown** is fabricated by the lab.



The Overcrown is adhesively bonded to existing frame intraorally with dual-cure cement by dentist.